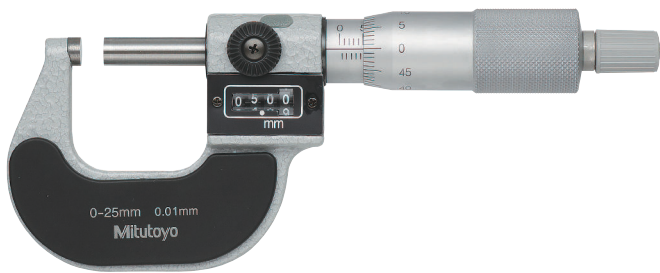


Digit Outside Micrometers

Series 193

This Digit Outside Micrometer comes with a mechanical counter and offers you the following benefits:

- Mechanical Digit counter
- Quick and easy reading



193-101

Metric

Graduation 0,001 mm is obtained with vernier on sleeve

| No. | Range [mm] | Graduation | Max. Permissible Error J MPE | Flatness | Parallelism | Measuring force [N] | L [mm] | a [mm] | b [mm] | c [mm] | Mass [g] |
|---------|------------|------------|------------------------------|----------|-------------|---------------------|--------|--------|--------|--------|----------|
| 193-111 | 0 - 25 | 0,001 mm | ±2 μm | 0,6 μm | 2 μm | 5-15 | 30 | 2,5 | 5 | 26 | 224 |
| 193-112 | 25 - 50 | 0,001 mm | ±2 μm | 0,6 μm | 2 μm | 5-15 | 55 | 2 | 8 | 32 | 275 |
| 193-113 | 50 - 75 | 0,001 mm | ±2 μm | 0,6 μm | 2 μm | 5-15 | 80 | 2 | 9 | 45 | 379 |
| 193-114 | 75 - 100 | 0,001 mm | ±3 μm | 0,6 μm | 3 μm | 5-15 | 105 | 2 | 9 | 57 | 489 |

Metric

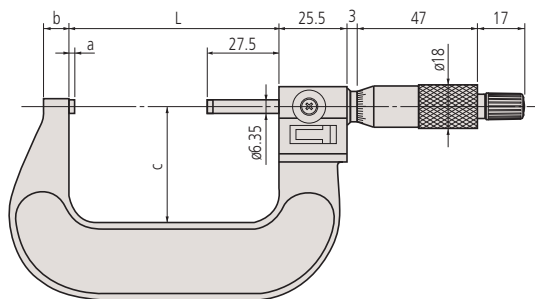
Graduation 0,01 mm

| No. | Range [mm] | Graduation | Max. Permissible Error J MPE | Flatness | Parallelism | Measuring force [N] | L [mm] | a [mm] | b [mm] | c [mm] | Mass [g] |
|---------|------------|------------|------------------------------|----------|-------------|---------------------|--------|--------|--------|--------|----------|
| 193-101 | 0 - 25 | 0,01 mm | ±2 μm | 0,6 μm | 2 μm | 5-15 | 30 | 2,5 | 5 | 26 | 224 |
| 193-102 | 25 - 50 | 0,01 mm | ±2 μm | 0,6 μm | 2 μm | 5-15 | 55 | 2 | 8 | 32 | 275 |
| 193-103 | 50 - 75 | 0,01 mm | ±2 μm | 0,6 μm | 2 μm | 5-15 | 80 | 2 | 9 | 45 | 379 |
| 193-104 | 75 - 100 | 0,01 mm | ±3 μm | 0,6 μm | 3 μm | 5-15 | 105 | 2 | 9 | 57 | 489 |

Metric

Micrometer set

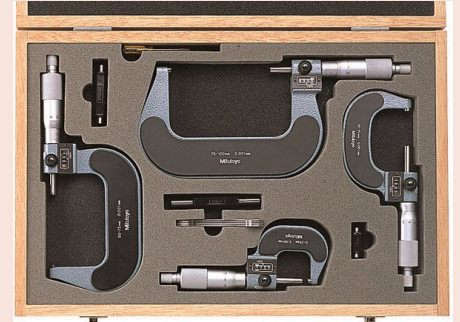
| No. | Range [mm] | Graduation | Measuring force [N] | Content of Set | Mass [g] |
|---------|------------|------------|---------------------|---|----------|
| 193-901 | 0 - 75 | 0,01 mm | 5-15 | 193-101, 193-102, 193-103, 2 setting standards | 820 |
| 193-902 | 0 - 100 | 0,01 mm | 5-15 | 193-101, 193-102, 193-103, 193-104, 3 setting standards | 1367 |



193-112

Specifications

| | |
|-------------------|--|
| Measuring face | Carbide-tipped, micro-lap finish |
| Measuring spindle | With spindle lock, ø 6,35 mm, spindle pitch 0,5 mm |
| Scale | Thimble and sleeve satin chrome finish ø18 mm |
| Delivered | Including box, setting standard (from 25 mm upward), key |



193-902